






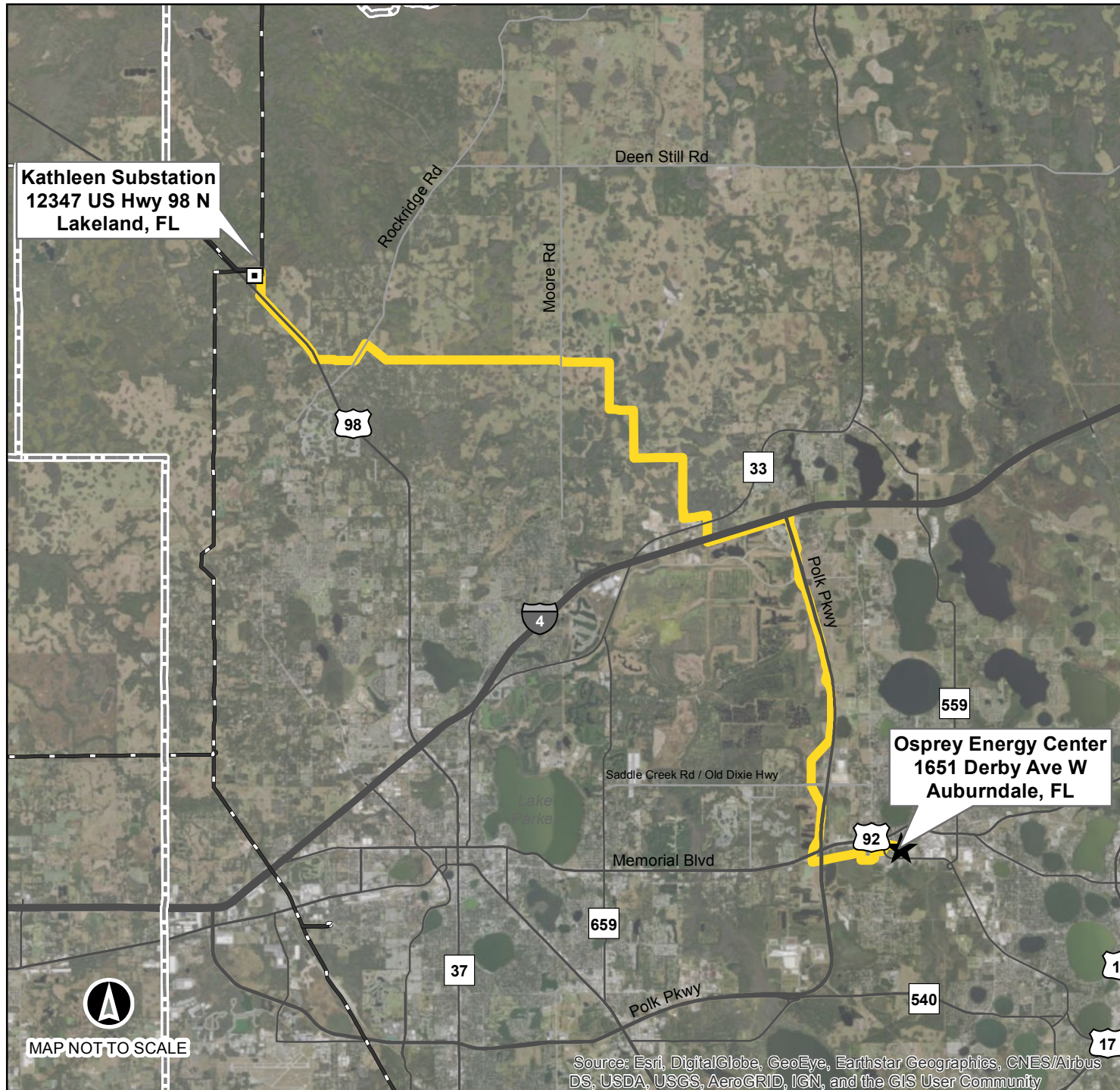
# POLK COUNTY RELIABILITY ENHANCEMENT PROJECT

## Legend

-  Existing Substation Location
-  New Substation Location
-  Existing Duke Energy Transmission Line
-  Kathleen Transmission Line Preferred Route
-  County Boundary

## Notes

1. The Osprey Energy Center is a power generating facility owned by Duke Energy.
2. The Preferred Route for the Kathleen Transmission Line extends west from the Osprey Energy Center to the existing Kathleen substation.



BUILDING A SMARTER ENERGY FUTURE<sup>SM</sup>